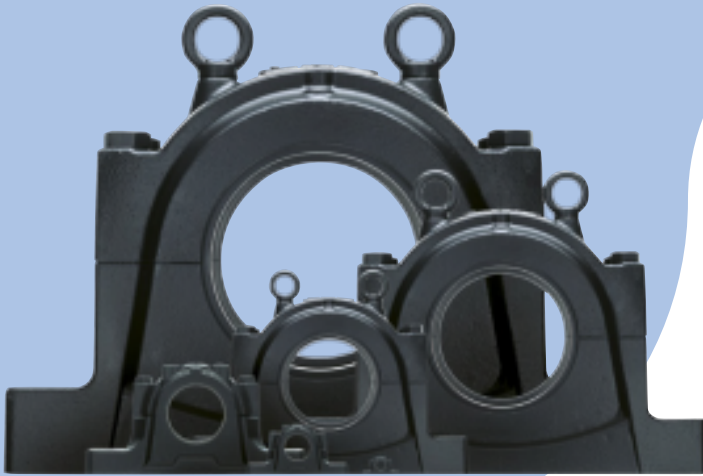


# Why SKF?

## SNL housings



The result of continual engineering advances over seven decades, SNL housings from SKF are today's most reliable and flexible solution for mounted bearing applications. Special design features, unique to SKF, enable the full service life potential of incorporated bearings to be realized while reducing maintenance costs and associated downtime. Designed on a modular basis, these integrated units are interchangeable with previous SKF models and available for shafts from 20 to 500 mm in diameter.

### Product features

- Robust, stiff, reinforced design
- High load carrying capacity
- Accommodates spherical roller bearings, self-aligning ball bearings or CARB
- High tensile bolts
- Good heat disbursement
- Standard relubrication facility
- Low lubricant consumption
- Clear marking for simple, error-free installation
- Housing bore not affected by mounting
- Withstands excessive bolt tightening
- Low sensitivity to unmachined surfaces
- Optimized condition monitoring positions
- Easy attachment of condition monitoring equipment

### User benefits

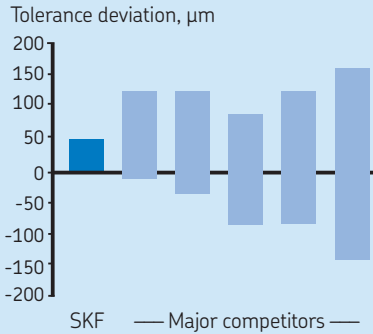
- Increased bearing life
- Reliable housing performance
- Minimal lubricant use
- Long lubrication intervals
- Simple, error-free mounting and alignment
- Full assortment of sealing arrangements
- Fast, easy, accurate seal mounting
- Low maintenance costs
- Low vibration level
- Low outer ring creep and housing wear
- Low operating temperature
- Safer work environment

### Common applications

- Fans
- Conveyors
- Mills
- Crushers
- Mining
- Others

# Industry leading performance

## High machining quality\*



## High machining quality

Extremely accurate bore tolerances provide improved bearing seat quality, resulting in low running temperatures, long bearing and seal life.

## Bearing service life

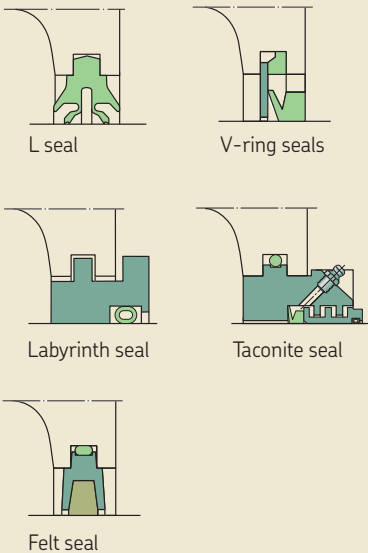
Strict compliance to specified bore tolerances improves housing performance and bearing service life.

## High strength material

Enables high load carrying capacity. Spheroidal graphite housing option suitable for high shock loading.

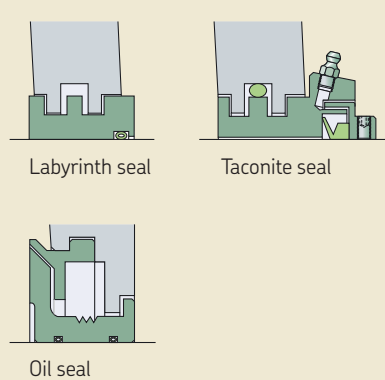
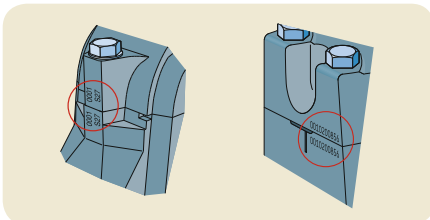
\* Competitor comparisons are based on measurements of selected European and Asian manufacturers, based on SKF laboratory tests.

## SNL housings series 2,3,5 and 6 and series 30,31 and 32



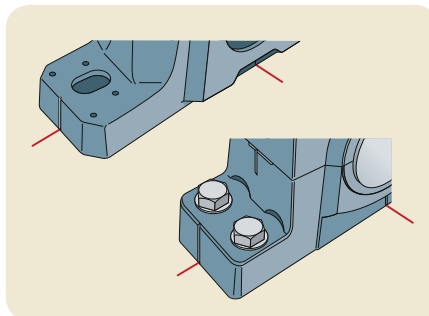
SNL series 2, 3, 5 and 6 seals

Individually marked caps and bases



SNL series 30, 31 and 32 seals

Easy mounting



## Sealing options

Range of different sealing arrangements available. Also fits earlier generations of SKF housing.

## Simple, accurate mounting and alignment

Caps and bases marked separately for fast, error-free and safe mounting. Identification markings are the same for easy traceability.

## Excellent heat conduction

An extra reinforcement in the middle of the housing improves heat flow from bearing to support surface.

® SKF is a registered trademark of the SKF Group.  
™ SKF Explorer and CARB are trademarks of the SKF Group.

© SKF Group 2011

The contents of this publication are the copyright of the publisher and may not be reproduced (even extracts) unless permission is granted. Every care has been taken to ensure the accuracy of the information contained in this publication but no liability can be accepted for any loss or damage whether direct, indirect or consequential arising out of the use of the information contained herein.

Publication 06617 EN · February 2011